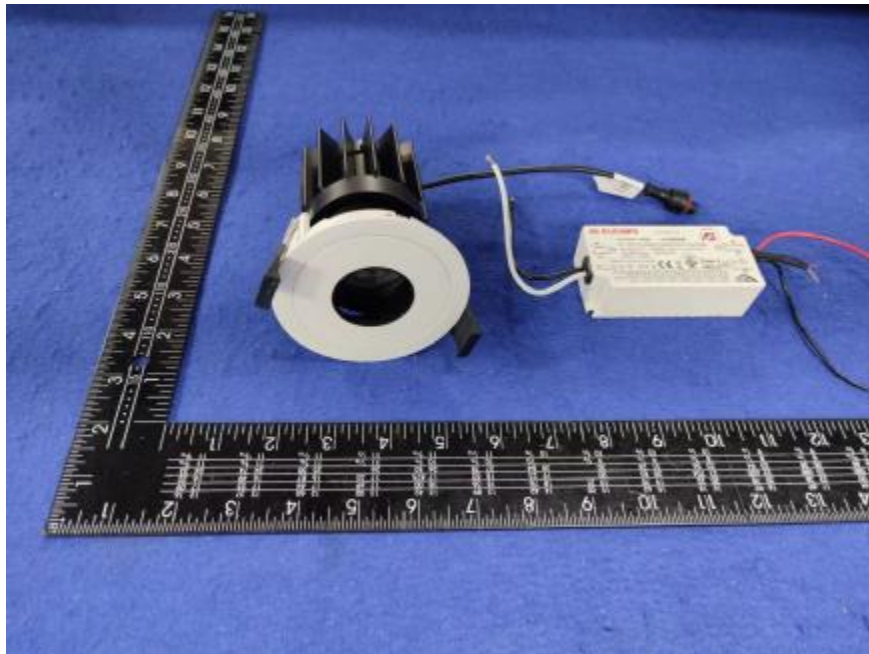


Luminaire Photograph



Light Output Ratio:	64.5%	
Luminaire Power:	13.81 W	
SHR Nominal:	0.50	Calculated using the TM5
SHR Maximum:	0.65	fine grid method.

C Range: 0 - 360DEG
C Interval: 30.0DEG
Test Speed: HIGH
Temperature: 25.3 °C
Operators: zoe
Test Date: 2023-12-18

Range: 0 - 180DEG
Interval: 1.0DEG
Test System: EVERFINE GO-SPEX500_V1 SYSTEM V2.00.461
Humidity: 65.0%
Test Distance: 3.160m [K=1.0000]
Remarks: LAMP: BXRE-30G1000-A-83 Ra:90
LENS: PM-1082B 36R
DRIVER: PUP20A-1WMC 350mA
30minutes warm-up

LUMINOUS INTENSITY DISTRIBUTION DIAGRAM

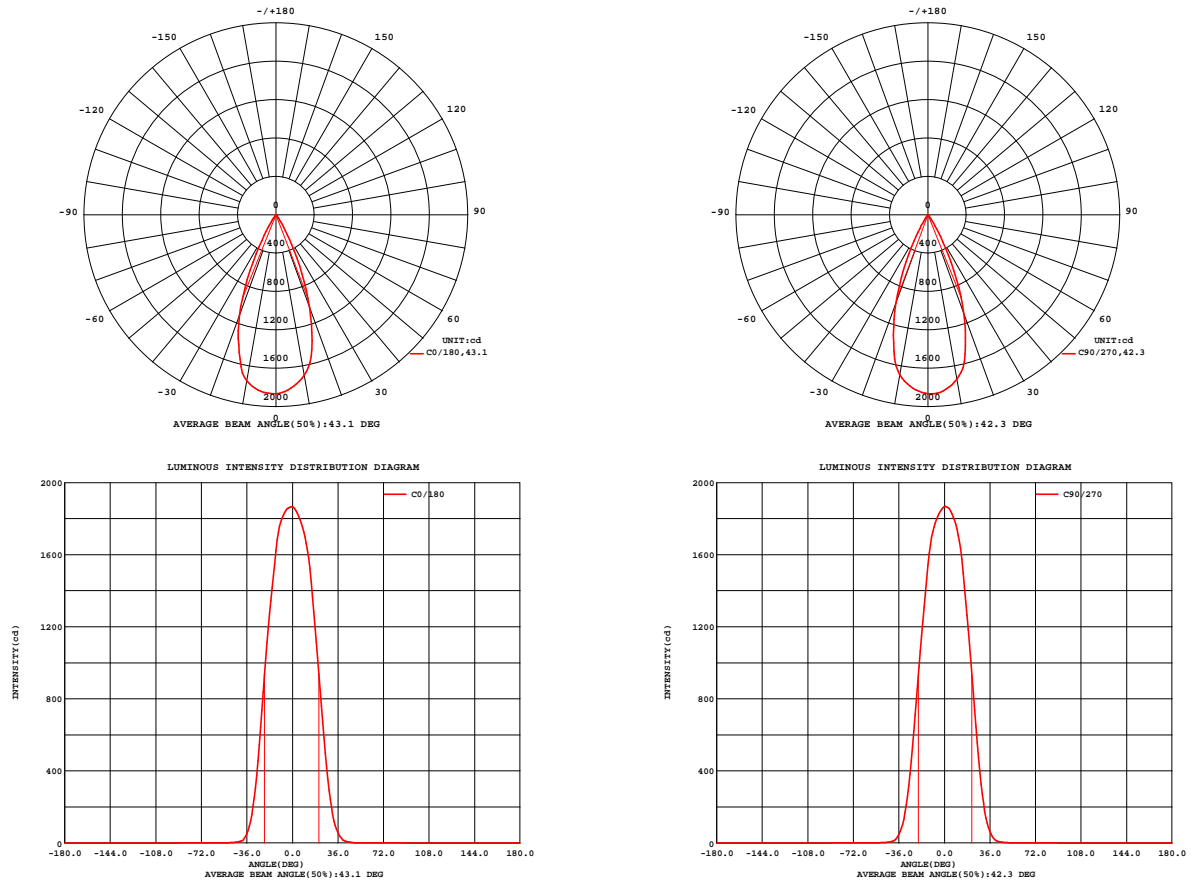


Fig. C0/C180

Fig. C90/C270

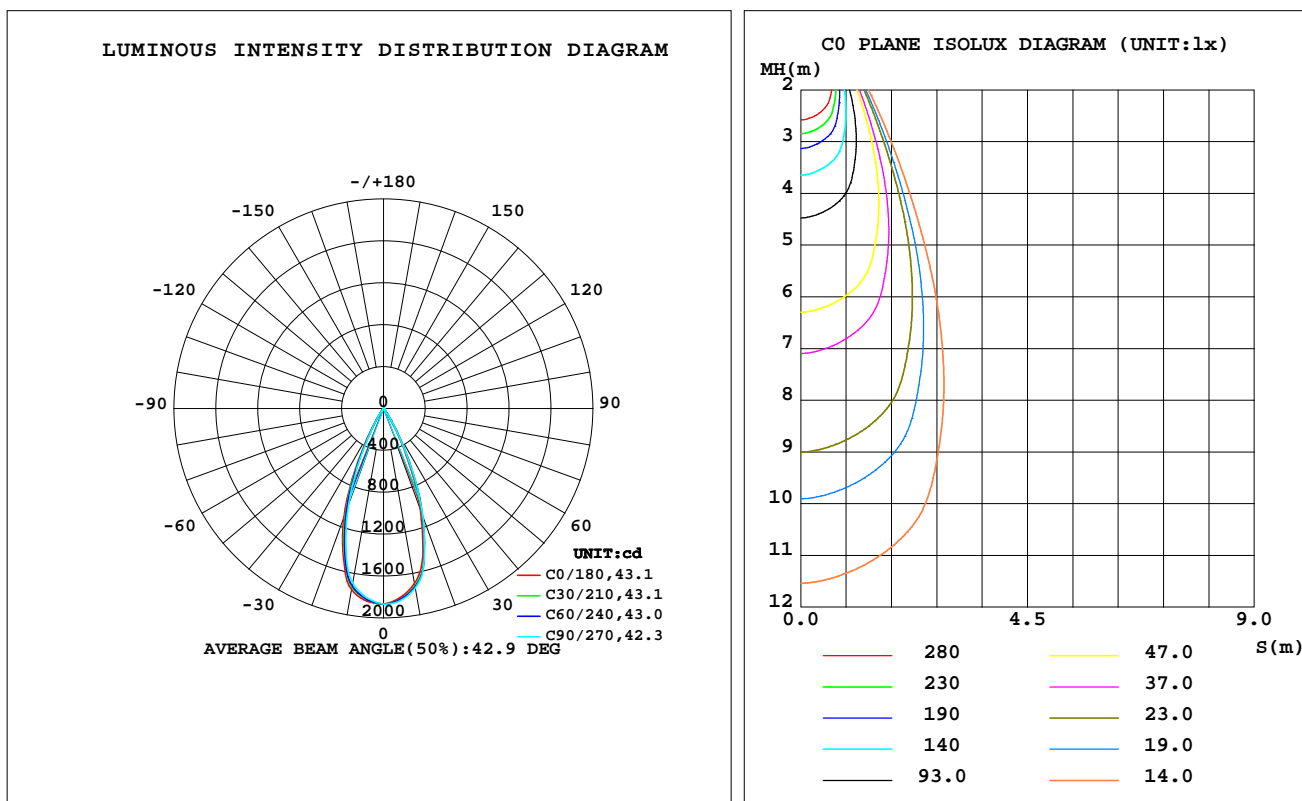
C Range: 0 - 360DEG
C Interval: 30.0DEG
Test Speed: HIGH
Temperature: 25.3 °C
Operators: zoe
Test Date: 2023-12-18

Range: 0 - 180DEG
Interval: 1.0DEG
Test System: EVERFINE GO-SPEX500_V1 SYSTEM V2.00.461
Humidity: 65.0%
Test Distance: 3.160m [K=1.0000]
Remarks: LAMP: BXRE-30G1000-A-83 Ra: 90
LENS: PM-1082B 36R
DRIVER: PUP20A-1WMC 350mA
30minutes warm-up

LUMINAIRE PHOTOMETRIC TEST REPORT

Test:U:120.14V I:0.1159A P:13.810W PF:0.9901 Freq:59.98Hz Lamp Flux:1402.44x1 lm		
NAME: 2318.115-LEA-14	TYPE:	WEIGHT:
SPEC.: 3000K	DIM.:	SERIAL No.: 2312181457
MFR.: RISE	SUR.: 0.0007065m2	Shielding Angle:

DATA OF LAMP		PHOTOMETRIC DATA Eff: 65.45 lm/W			
MODEL	Bridgelux	Imax(cd)	1868	S/MH(C0/180)	0.67
NOMINAL POWER(W)	14	LOR(%)	64.5	S/MH(C90/270)	0.64
RATED VOLTAGE(V)	120	TOTAL FLUX(lm)	903.89	UP,DN(C0-180)	0.0,33.4
NOMINAL FLUX(lm)	1402.44	CIE CLASS	DIRECT	UP,DN(C180-360)	0.0,31.0
LAMPS INSIDE	1	up(%)	0.0	CIBSE SHR NOM	0.50
TEST VOLTAGE(V)	120	down(%)	64.5	CIBSE SHR MAX	0.65



C Range: 0 - 360DEG
C Interval: 30.0DEG
Test Speed: HIGH
Temperature:25.3℃
Operators:zoe
Test Date:2023-12-18

Range: 0 - 180DEG
Interval: 1.0DEG
Test System:EVERFINE GO-SPEX500_V1 SYSTEM V2.00.461
Humidity:65.0%
Test Distance:3.160m [K=1.0000]
Remarks: LAMP:BXRE-30G1000-A-83 Ra:90
LENS:PM-1082B 36R
DRIVER:PUP20A-1WMC 350mA
30minutes warm-up

ZONAL FLUX DIAGRAM

ZONAL FLUX DIAGRAM:

	C0	C45	C90	C135	C180	C225	C270	C315		zone	total	%lum,lamp
10	1698	1725	1741	1761	1758	1727	1694	1680	0- 10	171.3	171.3	18.9,12.2
20	1028	1088	1099	1130	1112	1052	976.8	957.1	10- 20	396.4	567.7	62.8,40.5
30	239.9	267.6	268.5	281.6	250.2	226.3	208.6	206.4	20- 30	274.8	842.5	93.2,60.1
40	17.54	19.66	19.28	15.59	12.36	12.16	12.42	14.03	30- 40	55.68	898.1	99.4,64
50	1.351	1.537	1.918	2.021	1.579	1.513	1.825	1.636	40- 50	4.440	902.6	99.9,64.4
60	0.2736	0.2829	0.5563	0.7031	0.5724	0.5872	0.7134	0.5425	50- 60	0.7669	903.4	99.9,64.4
70	0.1627	0.1617	0.2239	0.2654	0.2381	0.2457	0.2771	0.2193	60- 70	0.3670	903.7	100,64.4
80	0.0706	0.0660	0.0657	0.0624	0.0602	0.0556	0.0679	0.0562	70- 80	0.1383	903.9	100,64.4
90	0	0	0	0	0	0	0	0	80- 90	0.0297	903.9	100,64.5
100	0	0	0	0	0	0	0	0	90-100	0	903.9	100,64.5
110	0	0	0	0	0	0	0	0	100-110	0	903.9	100,64.5
120	0	0	0	0	0	0	0	0	110-120	0	903.9	100,64.5
130	0	0	0	0	0	0	0	0	120-130	0	903.9	100,64.5
140	0	0	0	0	0	0	0	0	130-140	0	903.9	100,64.5
150	0	0	0	0	0	0	0	0	140-150	0	903.9	100,64.5
160	0	0	0	0	0	0	0	0	150-160	0	903.9	100,64.5
170	0	0	0	0	0	0	0	0	160-170	0	903.9	100,64.5
180	0	0	0	0	0	0	0	0	170-180	0	903.9	100,64.5
DEG	LUMINOUS INTENSITY:cd									UNIT:lm		

C Range: 0 - 360DEG
C Interval: 30.0DEG
Test Speed: HIGH
Temperature:25.3℃
Operators:zoe
Test Date:2023-12-18

Range: 0 - 180DEG
Interval: 1.0DEG
Test System:EVERFINE GO-SPEX500_V1 SYSTEM V2.00.461
Humidity:65.0%
Test Distance:3.160m [K=1.0000]
Remarks: LAMP:BXRE-30G1000-A-83 Ra:90
LENS:PM-1082B 36R
DRIVER:PUP20A-1WMC 350mA
30minutes warm-up

LUMINANCE LIMITATION CURVES

Test:U:120.14V I:0.1159A P:13.810W PF:0.9901 Freq:59.98Hz
Lamp Flux:1402.44x1 lm

NAME: 2318.115-LEA-14

TYPE:

WEIGHT:

SPEC.: 3000K

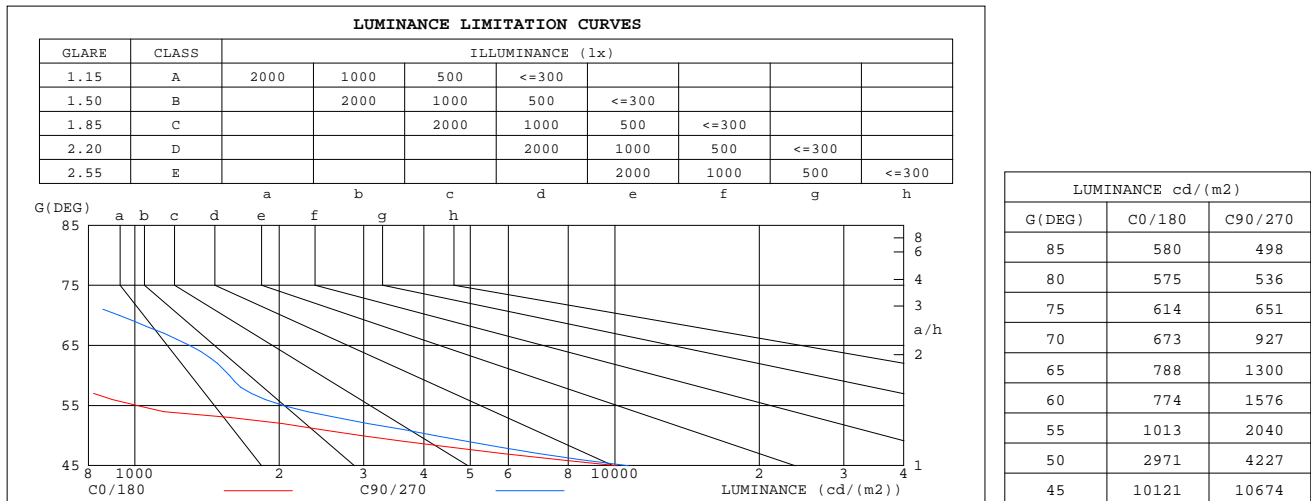
DIM.:

SERIAL No.: 2312181457

MFR.: RISE

SUR.: 0.0007065m2

Shielding Angle:



C Range: 0 - 360DEG
C Interval: 30.0DEG
Test Speed: HIGH
Temperature:25.3℃
Operators:zoe
Test Date:2023-12-18

Range: 0 - 180DEG
Interval: 1.0DEG
Test System:EVERFINE GO-SPEX500_V1 SYSTEM V2.00.461
Humidity:65.0%
Test Distance:3.160m [K=1.0000]
Remarks: LAMP:BXRE-30G1000-A-83 Ra:90
LENS:PM-1082B 36R
DRIVER:PUP20A-1WMC 350mA
30minutes warm-up

CU AND LUMINAIRE BUDGETARY ESTIMATE DIAGRAM

Test:U:120.14V I:0.1159A P:13.810W PF:0.9901 Freq:59.98Hz
Lamp Flux:1402.44x1 lm

NAME: 2318.115-LEA-14

TYPE:

WEIGHT:

SPEC.: 3000K

DIM.:

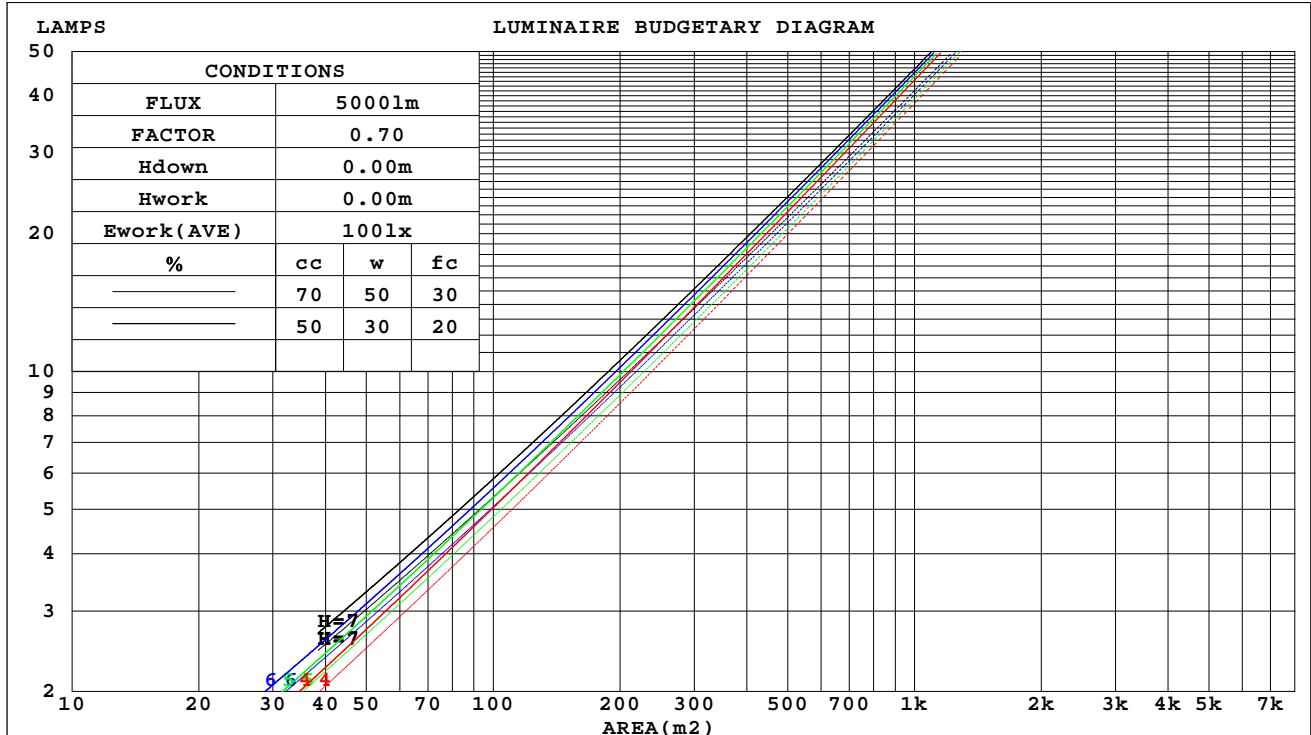
SERIAL No.: 2312181457

MFR.: RISE

SUR.: 0.0007065m2

Shielding Angle:

cc	80%			70%			50%			30%			10%			0
w	50%	30%	10%	50%	30%	10%	50%	30%	10%	50%	30%	10%	50%	30%	10%	0
fc	20%			20%			20%			20%			20%			0
RCR	RCR:Room Cavity Ratio															



C Range: 0 - 360DEG
C Interval: 30.0DEG
Test Speed: HIGH
Temperature:25.3℃
Operators:zoe
Test Date:2023-12-18

Range: 0 - 180DEG
Interval: 1.0DEG
Test System:EVERFINE GO-SPEX500_V1 SYSTEM V2.00.461
Humidity:65.0%
Test Distance:3.160m [K=1.0000]
Remarks: LAMP:BXRE-30G1000-A-83 Ra:90
LENS:PM-1082B 36R
DRIVER:PUP20A-1WMC 350mA
30minutes warm-up

WEC AND CCEC

Test:U:120.14V I:0.1159A P:13.810W PF:0.9901 Freq:59.98Hz Lamp Flux:1402.44x1 lm		
NAME: 2318.115-LEA-14	TYPE:	WEIGHT:
SPEC.: 3000K	DIM.:	SERIAL No.: 2312181457
MFR.: RISE	SUR.: 0.0007065m2	Shielding Angle:

cc	80%			70%			50%			30%			10%			0
w	50%	30%	10%	50%	30%	10%	50%	30%	10%	50%	30%	10%	50%	30%	10%	0
fc	20%			20%			20%			20%			20%			0
RCR	RCR:Room Cavity Ratio Wall Exitance Coefficients(WEC)															
0.0																
1.0	.098	.056	.018	.093	.053	.017	.085	.049	.016	.078	.045	.014	.071	.041	.013	
2.0	.092	.050	.015	.088	.049	.015	.081	.045	.014	.075	.042	.013	.070	.039	.012	
3.0	.086	.046	.014	.083	.045	.013	.078	.042	.013	.073	.040	.012	.068	.038	.012	
4.0	.082	.043	.012	.079	.041	.012	.074	.039	.012	.070	.038	.011	.066	.036	.011	
5.0	.078	.040	.011	.076	.039	.011	.071	.037	.011	.068	.036	.011	.064	.034	.010	
6.0	.074	.037	.011	.072	.036	.010	.069	.035	.010	.065	.034	.010	.062	.033	.010	
7.0	.071	.035	.010	.069	.034	.010	.066	.033	.010	.063	.032	.009	.060	.031	.009	
8.0	.068	.033	.009	.066	.033	.009	.064	.032	.009	.061	.031	.009	.059	.030	.009	
9.0	.065	.032	.009	.064	.031	.009	.061	.030	.009	.059	.030	.008	.057	.029	.008	
10.0	.063	.030	.008	.062	.030	.008	.059	.029	.008	.057	.028	.008	.055	.028	.008	

cc	80%			70%			50%			30%			10%			0
w	50%	30%	10%	50%	30%	10%	50%	30%	10%	50%	30%	10%	50%	30%	10%	0
fc	20%			20%			20%			20%			20%			0
RCR	RCR:Room Cavity Ratio Ceiling Cavity Exitance Coefficients(CCEC)															
0.0	.123	.123	.123	.105	.105	.105	.072	.072	.072	.041	.041	.041	.013	.013	.013	
1.0	.109	.102	.095	.093	.087	.081	.064	.060	.056	.037	.035	.033	.012	.011	.011	
2.0	.098	.085	.075	.084	.074	.065	.058	.051	.045	.033	.030	.026	.011	.010	.009	
3.0	.089	.073	.060	.076	.063	.052	.052	.044	.037	.030	.026	.022	.010	.008	.007	
4.0	.082	.063	.049	.070	.055	.043	.048	.038	.030	.028	.022	.018	.009	.007	.006	
5.0	.075	.056	.041	.065	.048	.036	.045	.034	.025	.026	.020	.015	.008	.006	.005	
6.0	.070	.049	.034	.060	.043	.030	.042	.030	.021	.024	.018	.013	.008	.006	.004	
7.0	.066	.044	.029	.056	.038	.025	.039	.027	.018	.023	.016	.011	.007	.005	.004	
8.0	.062	.040	.025	.053	.035	.022	.037	.024	.016	.021	.014	.009	.007	.005	.003	
9.0	.058	.037	.022	.050	.032	.019	.035	.022	.013	.020	.013	.008	.007	.004	.003	
10.0	.055	.034	.019	.048	.029	.017	.033	.021	.012	.019	.012	.007	.006	.004	.002	

C Range: 0 - 360DEG
C Interval: 30.0DEG
Test Speed: HIGH
Temperature:25.3℃
Operators:zoe
Test Date:2023-12-18

Range: 0 - 180DEG
Interval: 1.0DEG
Test System:EVERFINE GO-SPEX500_V1 SYSTEM V2.00.461
Humidity:65.0%
Test Distance:3.160m [K=1.0000]
Remarks: LAMP:BXRE-30G1000-A-83 Ra:90
LENS:PM-1082B 36R
DRIVER:PUP20A-1WMC 350mA
30minutes warm-up

UGR(Unified Glare Rating) Table

Test:U:120.14V I:0.1159A P:13.810W PF:0.9901 Freq:59.98Hz Lamp Flux:1402.44x1 lm										
NAME: 2318.115-LEA-14					TYPE:			WEIGHT:		
SPEC.: 3000K					DIM.:			SERIAL No.: 2312181457		
MFR.: RISE					SUR.: 0.0007065m2			Shielding Angle:		
ceiling/cavity	0.7	0.7	0.5	0.5	0.3	0.7	0.7	0.5	0.5	0.3
walls	0.5	0.3	0.5	0.3	0.3	0.5	0.3	0.5	0.3	0.3
working plane	0.2	0.2	0.2	0.2	0.2	0.2	0.2	0.2	0.2	0.2
Room dimensions	Viewed crosswise					Viewed endwise				
x = 2H y = 2H	15.5	16.2	15.7	16.4	16.5	16.0	16.8	16.2	16.9	17.1
3H	15.3	16.0	15.6	16.2	16.4	15.8	16.5	16.1	16.7	16.9
4H	15.2	15.9	15.5	16.1	16.3	15.8	16.4	16.0	16.6	16.8
6H	15.1	15.8	15.4	16.0	16.2	15.7	16.3	16.0	16.5	16.8
8H	15.1	15.7	15.4	16.0	16.2	15.6	16.2	15.9	16.5	16.7
12H	15.1	15.6	15.4	15.9	16.2	15.6	16.2	15.9	16.4	16.7
4H 2H	15.2	15.9	15.5	16.1	16.3	15.7	16.4	16.0	16.6	16.8
3H	15.1	15.6	15.4	15.9	16.2	15.6	16.2	15.9	16.4	16.7
4H	15.0	15.5	15.3	15.8	16.1	15.5	16.0	15.8	16.3	16.6
6H	14.9	15.3	15.2	15.7	16.0	15.4	15.8	15.8	16.2	16.5
8H	14.8	15.2	15.2	15.6	16.0	15.3	15.8	15.7	16.1	16.5
12H	14.8	15.2	15.2	15.5	15.9	15.3	15.7	15.7	16.0	16.4
8H 4H	14.8	15.2	15.2	15.6	16.0	15.3	15.8	15.7	16.1	16.5
6H	14.7	15.1	15.1	15.5	15.9	15.2	15.6	15.6	16.0	16.4
8H	14.6	15.0	15.1	15.4	15.8	15.2	15.5	15.6	15.9	16.3
12H	14.6	14.9	15.0	15.3	15.8	15.1	15.4	15.6	15.8	16.3
12H 4H	14.8	15.2	15.2	15.5	15.9	15.3	15.7	15.7	16.0	16.4
6H	14.6	15.0	15.1	15.4	15.8	15.2	15.5	15.6	15.9	16.3
8H	14.6	14.9	15.0	15.3	15.8	15.1	15.4	15.6	15.8	16.3
Variations with the observer position at spacings(CIE Pub.117):										
S = 1.0H	+ 4.5 / -17.0					+ 4.8 / -16.2				
1.5H	+ 7.2 / -16.2					+ 7.5 / -16.1				
2.0H	+ 7.4 / - 5.8					+ 7.0 / - 6.3				

CIE Pub.117, 1402 lm Total Lamp Luminous Flux Correct (8log(F/F0) = 1.2)
Area: 0.0007065 m2

C Range: 0 - 360DEG
C Interval: 30.0DEG
Test Speed: HIGH
Temperature:25.3℃
Operators:zoe
Test Date:2023-12-18

Range: 0 - 180DEG
Interval: 1.0DEG
Test System:EVERFINE GO-SPEX500_V1 SYSTEM V2.00.461
Humidity:65.0%
Test Distance:3.160m [K=1.0000]
Remarks: LAMP:BXRE-30G1000-A-83 Ra:90
LENS:PM-1082B 36R
DRIVER:PUP20A-1WMC 350mA
30minutes warm-up

UTILIZATION FACTORS TABLE

Test:U:120.14V I:0.1159A P:13.810W PF:0.9901 Freq:59.98Hz Lamp Flux:1402.44x1 lm		
NAME: 2318.115-LEA-14	TYPE:	WEIGHT:
SPEC.: 3000K	DIM.:	SERIAL No.: 2312181457
MFR.: RISE	SUR.: 0.0007065m2	Shielding Angle:

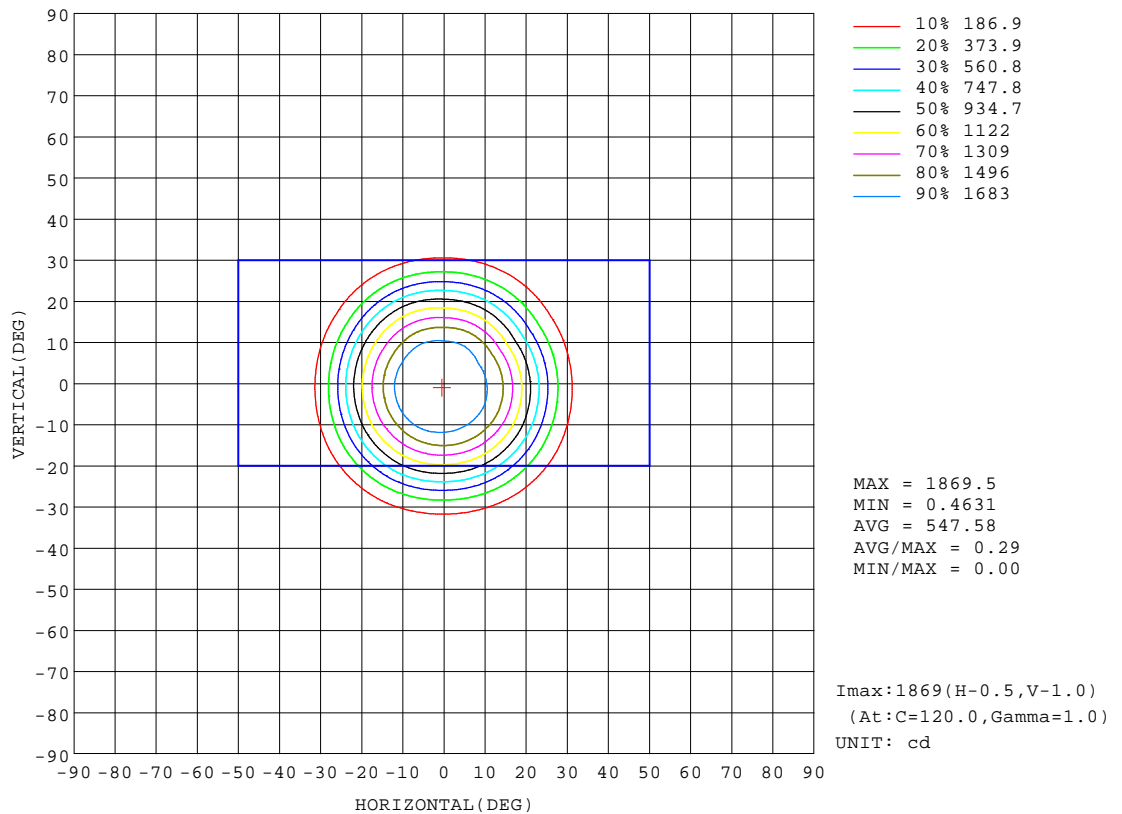
REFLECTANCE										
Ceiling	0.8	0.8	0.8	0.7	0.7	0.7	0.5	0.5	0.5	0
Walls	0.7	0.5	0.3	0.7	0.5	0.3	0.7	0.5	0.3	0
Working plane	0.2	0.2	0.2	0.2	0.2	0.2	0.2	0.2	0.2	0
ROOM INDEX	UTILIZATION FACTORS(PERCENT) $k(RI) \times RCR = 5$									
k = 0.60	59	55	53	58	55	53	58	55	53	51
0.80	63	60	58	63	60	58	62	59	57	55
1.00	66	62	60	65	62	60	64	62	60	58
1.25	68	65	63	67	65	63	66	64	62	60
1.50	69	67	65	69	66	65	67	65	64	61
2.00	71	68	67	70	68	66	68	67	65	62
2.50	72	70	68	71	69	67	69	67	66	62
3.00	73	71	69	72	70	68	69	68	67	63
4.00	74	72	71	73	71	70	70	69	68	64
5.00	75	73	72	73	72	71	71	70	69	64
ROOM INDEX	UF(total)									Direct
According to DIN EN 13032-2 2004			Suspended					SHRNOM = 1.25		

C Range: 0 - 360DEG
C Interval: 30.0DEG
Test Speed: HIGH
Temperature:25.3℃
Operators:zoe
Test Date:2023-12-18

Range: 0 - 180DEG
Interval: 1.0DEG
Test System:EVERFINE GO-SPEX500_V1 SYSTEM V2.00.461
Humidity:65.0%
Test Distance:3.160m [K=1.0000]
Remarks: LAMP:BXRE-30G1000-A-83 Ra:90
LENS:PM-1082B 36R
DRIVER:PUP20A-1WMC 350mA
30minutes warm-up

ISOCANDELA DIAGRAM

Test:U:120.14V I:0.1159A P:13.810W PF:0.9901 Freq:59.98Hz Lamp Flux:1402.44x1 lm		
NAME: 2318.115-LEA-14	TYPE:	WEIGHT:
SPEC.: 3000K	DIM.:	SERIAL No.: 2312181457
MFR.: RISE	SUR.: 0.0007065m2	Shielding Angle:

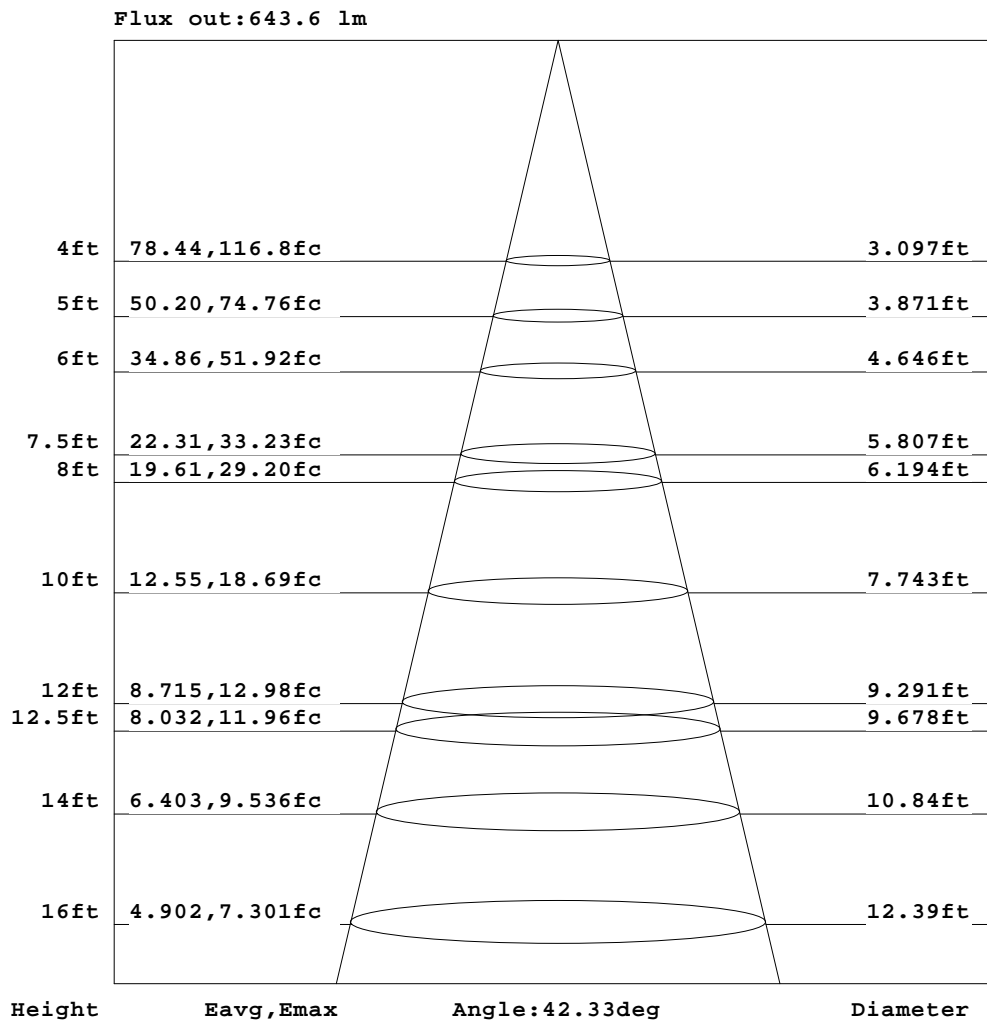


C Range: 0 - 360DEG
C Interval: 30.0DEG
Test Speed: HIGH
Temperature:25.3℃
Operators:zoe
Test Date:2023-12-18

Range: 0 - 180DEG
Interval: 1.0DEG
Test System:EVERFINE GO-SPEX500_V1 SYSTEM V2.00.461
Humidity:65.0%
Test Distance:3.160m [K=1.0000]
Remarks: LAMP:BXRE-30G1000-A-83 Ra:90
LENS:PM-1082B 36R
DRIVER:PUP20A-1WMC 350mA
30minutes warm-up

AAI Figure

Test:U:120.14V I:0.1159A P:13.810W PF:0.9901 Freq:59.98Hz Lamp Flux:1402.44x1 lm		
NAME: 2318.115-LEA-14	TYPE:	WEIGHT:
SPEC.: 3000K	DIM.:	SERIAL No.: 2312181457
MFR.: RISE	SUR.: 0.0007065m2	Shielding Angle:



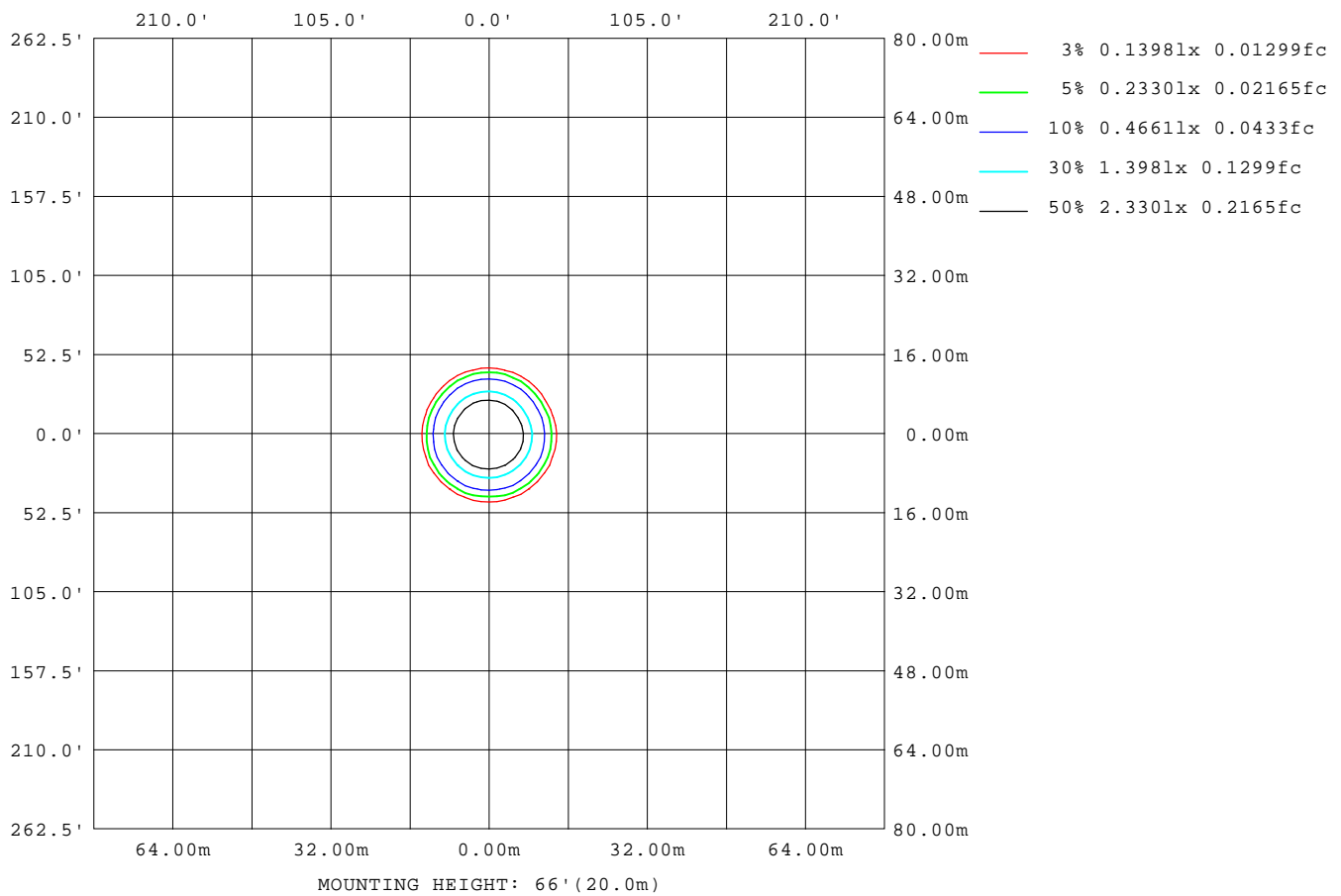
Note: The Curves indicate the illuminated area and the average illumination when the luminaire is at different distance.

C Range: 0 - 360DEG
C Interval: 30.0DEG
Test Speed: HIGH
Temperature: 25.3°C
Operators: zoe
Test Date: 2023-12-18

Range: 0 - 180DEG
Interval: 1.0DEG
Test System: EVERFINE GO-SPEX500_V1 SYSTEM V2.00.461
Humidity: 65.0%
Test Distance: 3.160m [K=1.0000]
Remarks: LAMP: BXRE-30G1000-A-83 Ra: 90
LENS: PM-1082B 36R
DRIVER: PUP20A-1WMC 350mA
30minutes warm-up

ISOLUX DIAGRAM

Test:U:120.14V I:0.1159A P:13.810W PF:0.9901 Freq:59.98Hz Lamp Flux:1402.44x1 lm		
NAME: 2318.115-LEA-14	TYPE:	WEIGHT:
SPEC.: 3000K	DIM.:	SERIAL No.: 2312181457
MFR.: RISE	SUR.: 0.0007065m2	Shielding Angle:



C Range: 0 - 360DEG
C Interval: 30.0DEG
Test Speed: HIGH
Temperature:25.3°C
Operators:zoe
Test Date:2023-12-18

Range: 0 - 180DEG
Interval: 1.0DEG
Test System:EVERFINE GO-SPEX500_V1 SYSTEM V2.00.461
Humidity:65.0%
Test Distance:3.160m [K=1.0000]
Remarks: LAMP:BXRE-30G1000-A-83 Ra:90
LENS:PM-1082B 36R
DRIVER:PUP20A-1WMC 350mA
30minutes warm-up

LED Avg.L Report

Test:U:120.14V I:0.1159A P:13.810W PF:0.9901 Freq:59.98Hz Lamp Flux:1402.44x1 lm		
NAME: 2318.115-LEA-14	TYPE:	WEIGHT:
SPEC.: 3000K	DIM.:	SERIAL No.: 2312181457
MFR.: RISE	SUR.: 0.0007065m2	Shielding Angle:

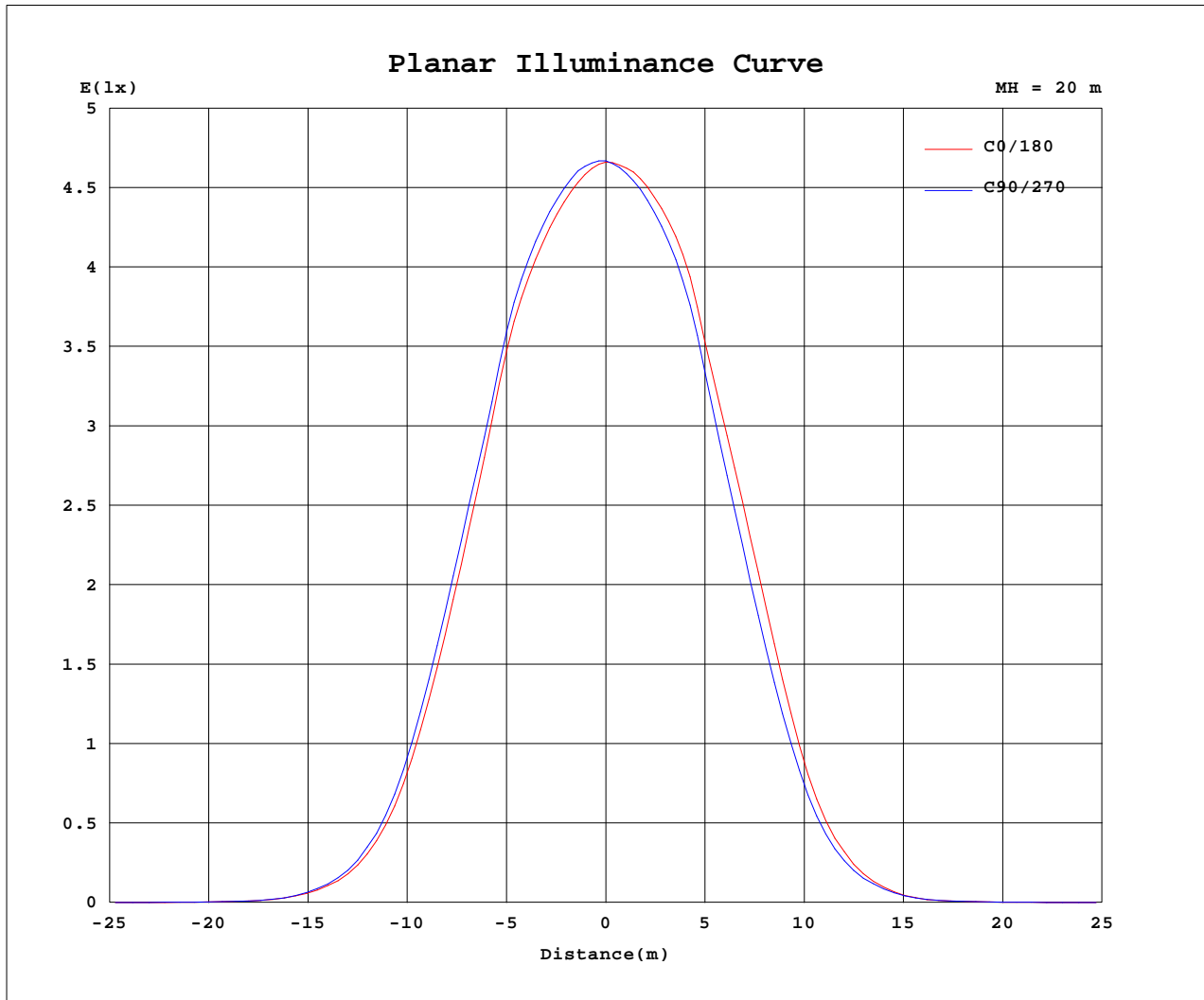
AvgL	cd/m2
L_0~180(65)av	1048
L_0~180(75)av	664
L_0~180(85)av	464
L_90~270(65)av	1429
L_90~270(75)av	734
L_90~270(85)av	443
L_45(65)av	1230
L_45(75)av	680
L_45(85)av	348

Standard: GB/T 29293-2012

C Range: 0 - 360DEG
C Interval: 30.0DEG
Test Speed: HIGH
Temperature:25.3℃
Operators:zoe
Test Date:2023-12-18

Range: 0 - 180DEG
Interval: 1.0DEG
Test System:EVERFINE GO-SPEX500_V1 SYSTEM V2.00.461
Humidity:65.0%
Test Distance:3.160m [K=1.0000]
Remarks: LAMP:BXRE-30G1000-A-83 Ra:90
LENS:PM-1082B 36R
DRIVER:PUP20A-1WMC 350mA
30minutes warm-up

Planar Illuminance Curve



C Range: 0 - 360DEG
 C Interval: 30.0DEG
 Test Speed: HIGH
 Temperature: 25.3 °C
 Operators: zoe
 Test Date: 2023-12-18

Range: 0 - 180DEG
 Interval: 1.0DEG
 Test System: EVERFINE GO-SPEX500_V1 SYSTEM V2.00.461
 Humidity: 65.0%
 Test Distance: 3.160m [K=1.0000]
 Remarks: LAMP: BXRE-30G1000-A-83 Ra: 90
 LENS: PM-1082B 36R
 DRIVER: PUP20A-1WMC 350mA
 30minutes warm-up



LUMINOUS DISTRIBUTION INTENSITY DATA

Test:U:120.14V I:0.1159A P:13.810W PF:0.9901 Freq:59.98Hz Lamp Flux:1402.44x1 lm		
NAME: 2318.115-LEA-14	TYPE:	WEIGHT:
SPEC.: 3000K	DIM.:	SERIAL No.: 2312181457
MFR.: RISE	SUR.: 0.0007065m2	Shielding Angle:

Table--1

UNIT: cd

C(DEG) (DEG)	0	30	60	90	120	150	180	210	240	270	300	330						
0	1866	1866	1866	1866	1866	1866	1866	1866	1866	1866	1866	1866						
5	1813	1829	1830	1842	1842	1853	1845	1831	1830	1815	1813	1802						
10	1698	1721	1729	1741	1756	1767	1758	1732	1722	1694	1691	1669						
15	1451	1490	1499	1501	1509	1500	1482	1444	1429	1385	1393	1385						
20	1028	1079	1097	1099	1129	1130	1112	1068	1037	977	971	943						
25	585	626	648	645	681	673	641	594	578	538	532	512						
30	240	264	272	268	284	279	250	226	227	209	211	202						
35	77.9	85.8	90.2	85.9	89.7	83.5	70.8	65.4	64.9	62.5	64.0	63.4						
40	17.5	20.7	18.6	19.3	16.3	14.8	12.4	12.0	12.4	12.4	13.6	14.5						
45	5.06	5.29	5.50	5.33	5.51	4.91	3.95	3.73	4.01	4.08	4.76	4.67						
50	1.35	1.47	1.60	1.92	2.14	1.91	1.58	1.49	1.54	1.83	1.80	1.47						
55	0.41	0.43	0.51	0.83	1.08	0.88	0.75	0.74	0.79	0.97	0.92	0.57						
60	0.27	0.26	0.31	0.56	0.78	0.63	0.57	0.57	0.60	0.71	0.68	0.40						
65	0.24	0.22	0.25	0.39	0.50	0.42	0.39	0.39	0.41	0.47	0.45	0.30						
70	0.16	0.16	0.17	0.22	0.28	0.25	0.24	0.24	0.25	0.28	0.26	0.18						
75	0.11	0.12	0.10	0.12	0.15	0.13	0.13	0.13	0.14	0.15	0.13	0.10						
80	0.07	0.07	0.06	0.07	0.06	0.06	0.06	0.05	0.06	0.07	0.06	0.05						
85	0.04	0.03	0.03	0.03	0.02	0.02	0.02	0.01	0.01	0.02	0.02	0.02						
90	0.00	0.00	0.00	0.00	0.00	0.00	0.00	0.00	0.00	0.00	0.00	0.00						
95	0.00	0.00	0.00	0.00	0.00	0.00	0.00	0.00	0.00	0.00	0.00	0.00						
100	0.00	0.00	0.00	0.00	0.00	0.00	0.00	0.00	0.00	0.00	0.00	0.00						
105	0.00	0.00	0.00	0.00	0.00	0.00	0.00	0.00	0.00	0.00	0.00	0.00						
110	0.00	0.00	0.00	0.00	0.00	0.00	0.00	0.00	0.00	0.00	0.00	0.00						
115	0.00	0.00	0.00	0.00	0.00	0.00	0.00	0.00	0.00	0.00	0.00	0.00						
120	0.00	0.00	0.00	0.00	0.00	0.00	0.00	0.00	0.00	0.00	0.00	0.00						
125	0.00	0.00	0.00	0.00	0.00	0.00	0.00	0.00	0.00	0.00	0.00	0.00						
130	0.00	0.00	0.00	0.00	0.00	0.00	0.00	0.00	0.00	0.00	0.00	0.00						
135	0.00	0.00	0.00	0.00	0.00	0.00	0.00	0.00	0.00	0.00	0.00	0.00						
140	0.00	0.00	0.00	0.00	0.00	0.00	0.00	0.00	0.00	0.00	0.00	0.00						
145	0.00	0.00	0.00	0.00	0.00	0.00	0.00	0.00	0.00	0.00	0.00	0.00						
150	0.00	0.00	0.00	0.00	0.00	0.00	0.00	0.00	0.00	0.00	0.00	0.00						
155	0.00	0.00	0.00	0.00	0.00	0.00	0.00	0.00	0.00	0.00	0.00	0.00						
160	0.00	0.00	0.00	0.00	0.00	0.00	0.00	0.00	0.00	0.00	0.00	0.00						
165	0.00	0.00	0.00	0.00	0.00	0.00	0.00	0.00	0.00	0.00	0.00	0.00						
170	0.00	0.00	0.00	0.00	0.00	0.00	0.00	0.00	0.00	0.00	0.00	0.00						
175	0.00	0.00	0.00	0.00	0.00	0.00	0.00	0.00	0.00	0.00	0.00	0.00						
180	0.00	0.00	0.00	0.00	0.00	0.00	0.00	0.00	0.00	0.00	0.00	0.00						

C Range: 0 - 360DEG
C Interval: 30.0DEG
Test Speed: HIGH
Temperature:25.3℃
Operators:zoe
Test Date:2023-12-18

Range: 0 - 180DEG
Interval: 1.0DEG
Test System:EVERFINE GO-SPEX500_V1 SYSTEM V2.00.461
Humidity:65.0%
Test Distance:3.160m [K=1.0000]
Remarks: LAMP:BXRE-30G1000-A-83 Ra:90
LENS:PM-1082B 36R
DRIVER:PUP20A-1WMC 350mA
30minutes warm-up